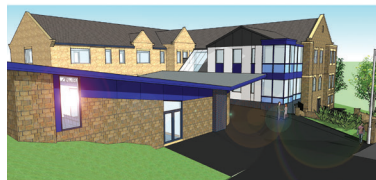


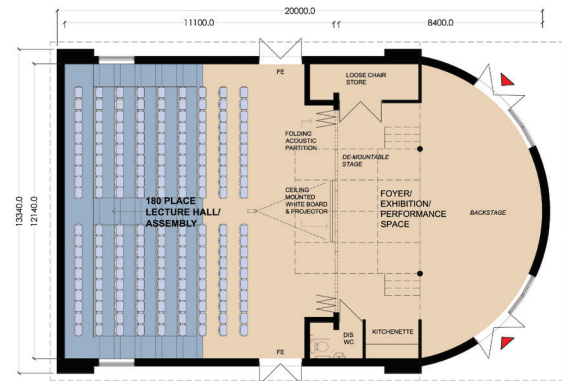
Multi-purpose Building

As space is at a premium, we have initial ideas for a multi-functional building to be located opposite the proposed Maths Classroom Block, adjacent to the Clark Building. Our architect has utilised the layout to its full potential to maximise the land and provide us with a space which offers us the opportunity to hold year assemblies, to stage theatre and music productions as well as being an area where lower school students can socialise after lunchtime dining.

This project is a key part of our development plan, but the immediate priorities such as science, learning resources, ICT facilities and the Dining Room need to be addressed first. The predicted cost of this building is £1 million.



Bacup & Rawtenstall
Grammar School



PROPOSED NEW LECTURE HALL & MULTI PURPOSE SPACE

